



# FatTwin™

## 16% Net Power Savings with Supermicro FatTwin™ Solutions

- **Best Efficiency** - 16% Less Power Used than Major Competitor
- **Best Density** - 8 Hot-swap 3.5" HDDs per 1U Space  
- 12 Double-Width Xeon Phi™ Cards in 4U
- **Best Performance** - 135W highest-end CPU Supported
- Supports Intel® Xeon® Processor E5-2600 and E5-2600 v2 product families

### FatTwin Advantage

FatTwin delivers maximum performance, efficiency and versatility for scientific, research, engineering, and enterprise organizations requiring high-performance, scalable computing and storage solutions for mission-critical applications. The platform is optimized for process intensive database driven applications including Big Data and Hadoop analytics, gas and oil exploration, HPC, computational finance, search engines, design and modeling, simulation and many other applications.

**SYS-F647G2-FT+ Series**  
4U, 2 Nodes  
Front I/O

**New!**



**SYS-F617R2-F Series**  
4U, 8 Nodes  
Front I/O



**SYS-F617R3-F Series**  
4U, 8 Nodes  
Front I/O



**SYS-F627R2-F Series**  
4U, 4 Nodes  
Front I/O



**SYS-F617R2-R Series**  
4U, 8 Nodes  
Rear I/O



**SYS-F627R3-R Series**  
4U, 4 Nodes  
Rear I/O



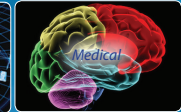
**SYS-F627G2-F Series**  
4U, 4 Nodes  
Front I/O



**SYS-F627R3-F Series**  
4U, 4 Nodes  
Front I/O

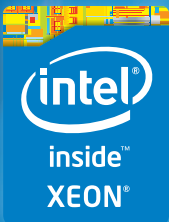
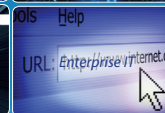


**SYS-F627G3-F Series**  
4U, 4 Nodes  
Front I/O



### Flexible Designs Optimized for a variety of Applications, including:

- Data Center / Cloud / Hadoop applications
- HPC / GPU applications
- Science / Research environments
- Finance / Oil & Gas markets



[www.supermicro.com/FatTwin](http://www.supermicro.com/FatTwin)



© Super Micro Computer, Inc. Specifications subject to change without notice.  
Intel, the Intel logo, Xeon, and Xeon Inside are trademarks or registered trademarks of Intel Corporation in the U.S. and/or other countries.  
All other brands and names are the property of their respective owners.

